



*Live Fit. Live Full. Live Here!*



[www.desaihomes.com](http://www.desaihomes.com)

K-RERA/PRJ/TVM/076/2025  
[www.rera.kerala.gov.in](http://www.rera.kerala.gov.in)





# DESAI HOMES®

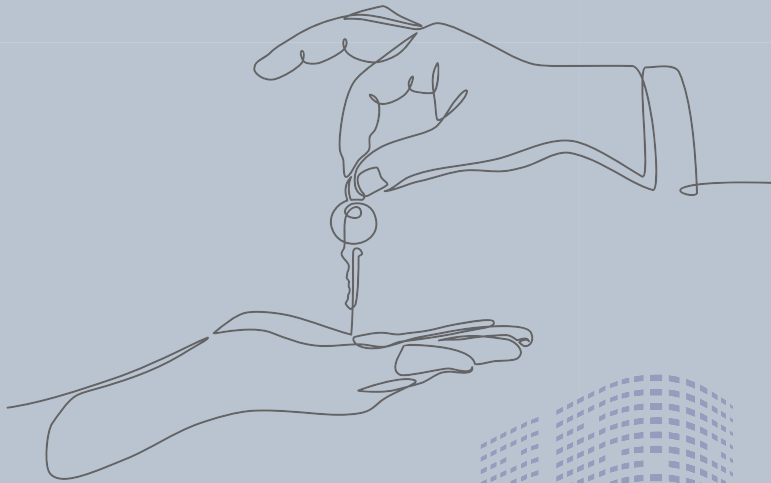
A Concrete Business Move

An ISO 9001 : 2015 Certified Company



## DESAI'S DREAM

A LEGACY OF TRUST



Desai Group of Companies, which was established in 1952, has consistently placed customer satisfaction and quality as the driving force behind all its ventures. In 1992, the company launched Desai Homes to expand its portfolio to include real estate development. Desai Homes began with real estate development in Kochi and has now completed, ongoing and proposed over 61 residential and commercial projects. The company's trademark, 'DD', is synonymous with perfection in aesthetics, superior amenities, prime locations, optimal return on investment, and much more.

Desai Homes has played a significant role in transforming the real estate landscape in Kochi and has since expanded its property development to Trivandrum, Kottayam, Thiruvalla, Thrissur and Kozhikode. With an unwavering legacy of trust, the company is planning to launch further projects in Coimbatore. The company offers a wide range of residential and commercial properties to meet the diverse needs of its customers. Whether you're looking for a luxury apartment, a villa, or a commercial property, Desai Homes has something to offer that meets your requirements and exceeds your expectations. Desai Homes is dedicated to maintaining its legacy of trust by providing exceptional service and quality in all its ventures.



Embrace the spirit of active living at **DD Stadia**- Pallipuram, Trivandrum, the latest landmark in DD Sports City. With a spacious layout, DD Stadia is designed for individuals who embrace a dynamic lifestyle. Set within a vibrant, sports-focused community, it provides the ideal backdrop for prioritising health, wellness, and a lively everyday experience.

Choose from beautifully designed 2 & 3 BHK apartments that seamlessly combine modern luxury with easy access to top-notch sports facilities. Energise your lifestyle, stay fit, and give your family a life rooted in vitality, movement, and everyday well-being.



**61+**  
PRESTEGIOUS  
PROJECTS

**8.5M+**  
MILLION  
SQ.FT

**33**  
YEARS OF  
EXCELLENCE

**6.5K**  
HAPPY  
CUSTOMERS





# TYPICAL FLOOR PLAN (2<sup>nd</sup> to 19<sup>th</sup>)



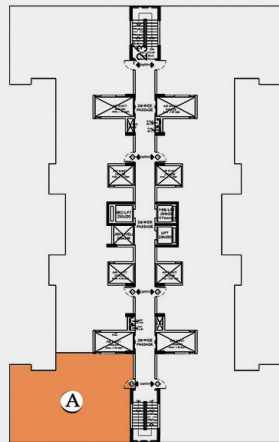
Dimensions may vary slightly during construction. Furniture and fixtures are indicative only. All dimensions are in centimetres. Plans and areas are subject to minor changes.



## TYPE - A 3 BHK

**SUPER BUILT UP AREA- 1449 SQFT**

Carpet area as per RERA- (Including internal walls and toilet, excluding balcony)- 1049 SQFT

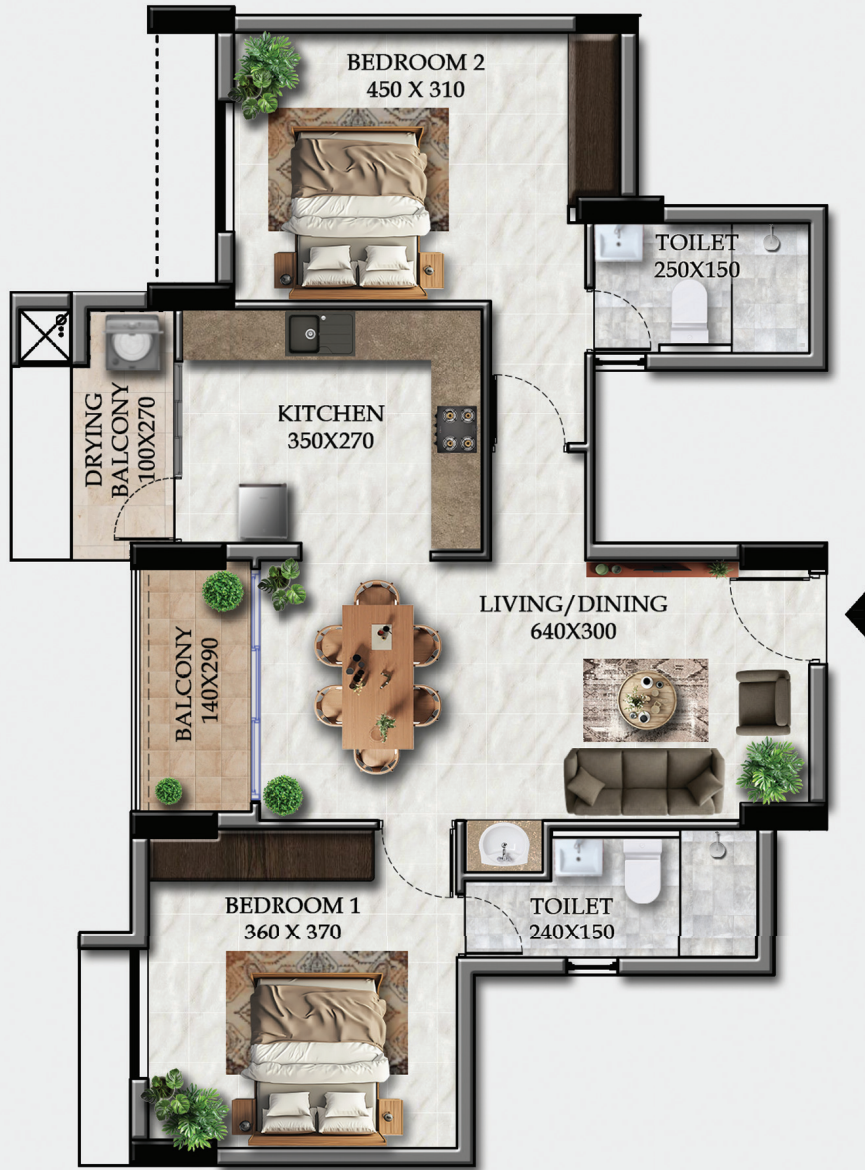
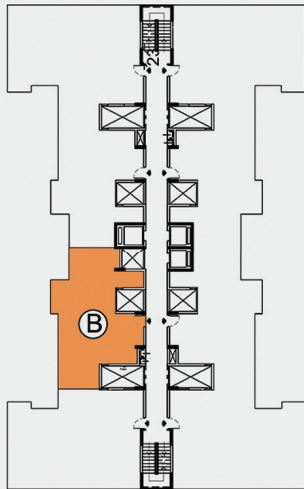




## TYPE - B 2 BHK

**SUPER BUILT UP AREA- 1134 SQFT**

Carpet area as per RERA- (Including internal walls and toilet, excluding balcony)- 791SQFT

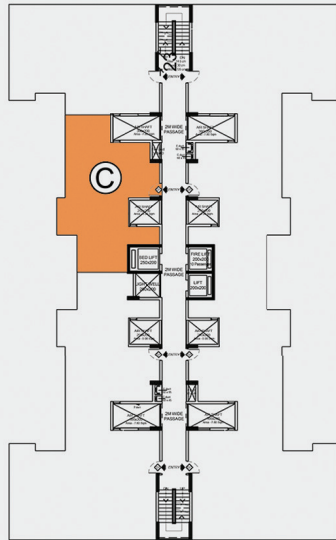


Dimensions may vary slightly during construction. Furniture and fixtures are indicative only. All dimensions are in centimetres. Plans and areas are subject to minor changes.



## TYPE - C 2 BHK SUPER BUILT UP AREA- 1115 SQFT

Carpet area as per RERA- (Including internal walls and toilet, excluding balcony)- 776 SQFT

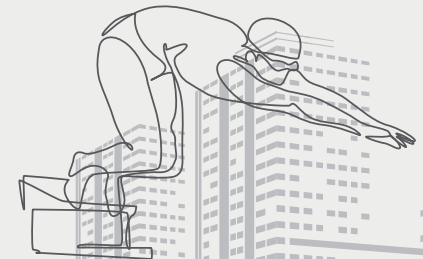
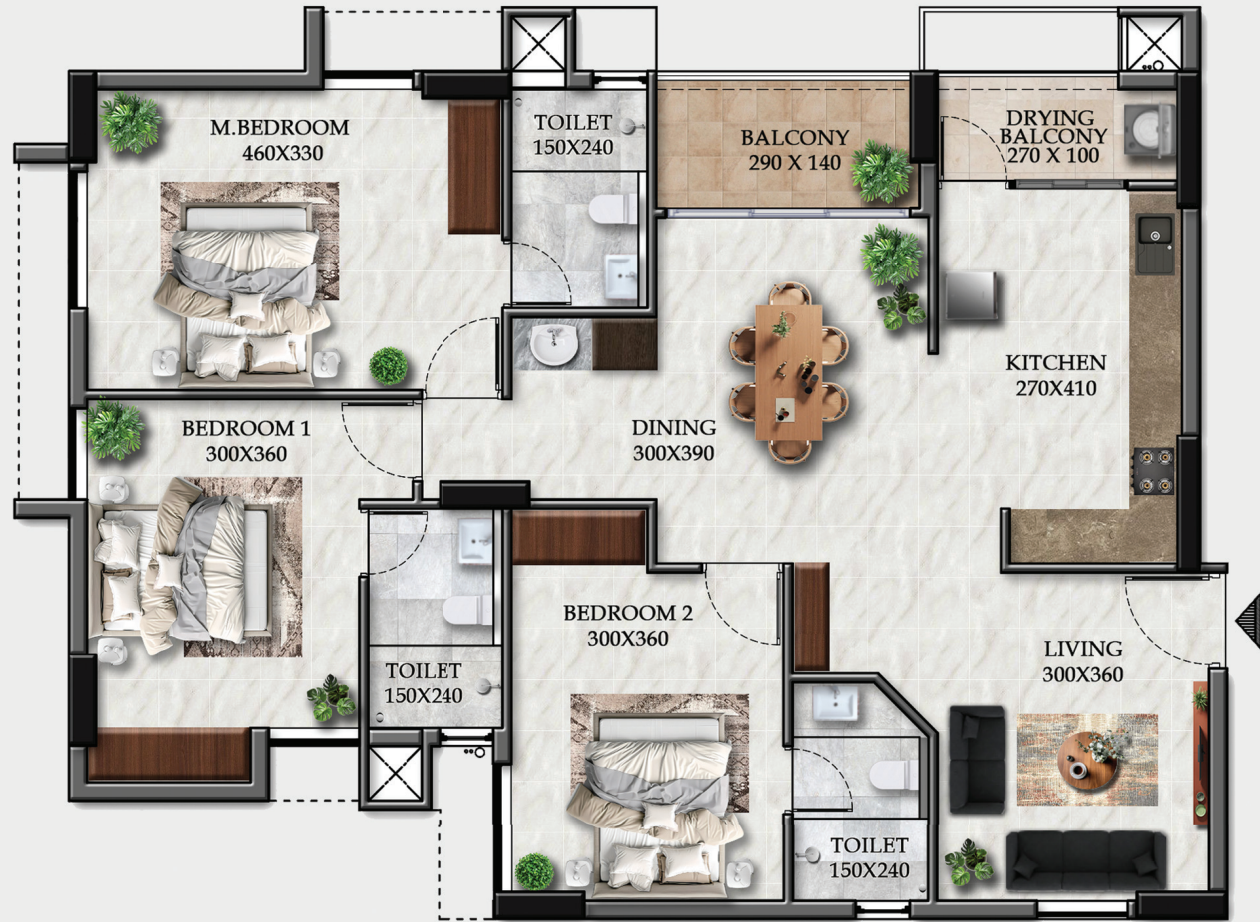
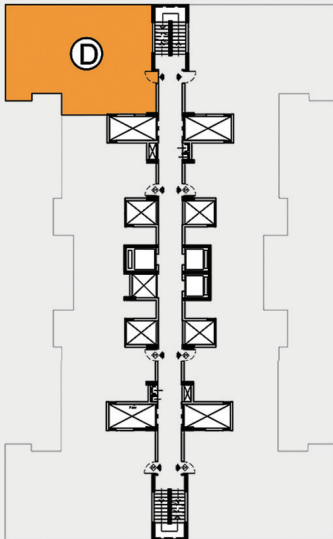






## TYPE - D 3 BHK SUPER BUILT UP AREA- 1449 SQFT

Carpet area as per RERA- (Including internal walls and toilet, excluding balcony)- 1049 SQFT

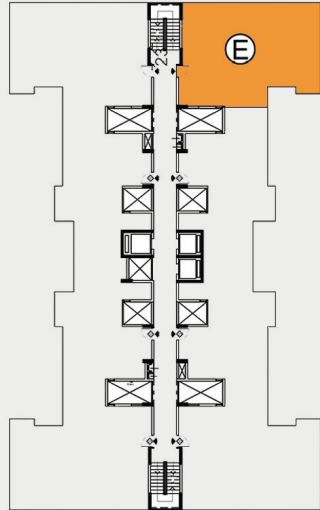




## TYPE - E 3 BHK

**SUPER BUILT UP AREA- 1449 SQFT**

Carpet area as per RERA- (Including internal walls and toilet, excluding balcony)- 1049 SQFT

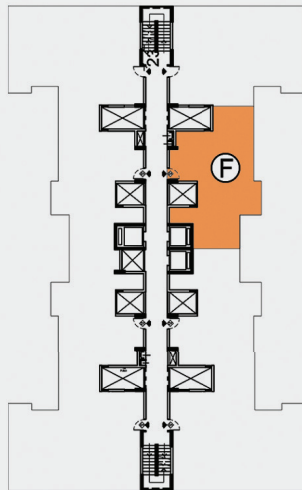




## TYPE - F 2 BHK

**SUPER BUILT UP AREA- 1121 SQFT**

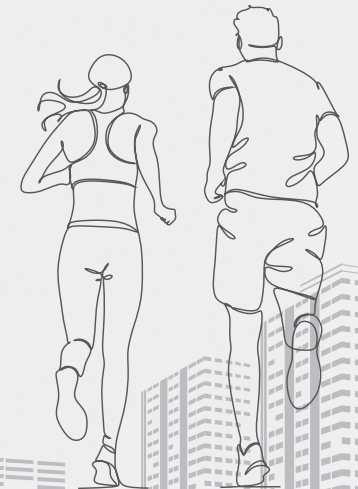
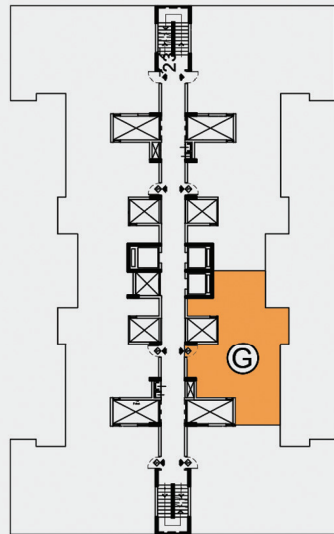
Carpet area as per RERA- (Including internal walls and toilet, excluding balcony)- 781 SQFT





## TYPE - G 2 BHK SUPER BUILT UP AREA- 1117 SQFT

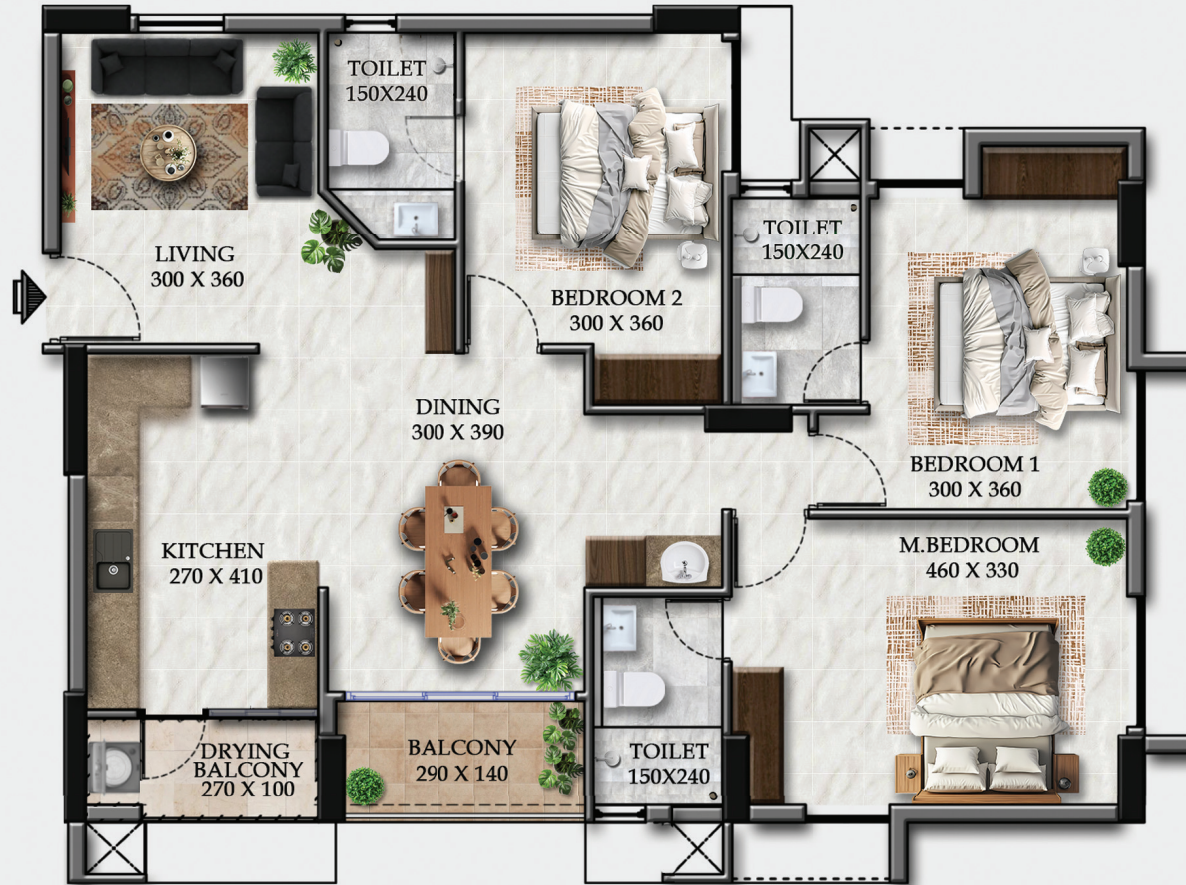
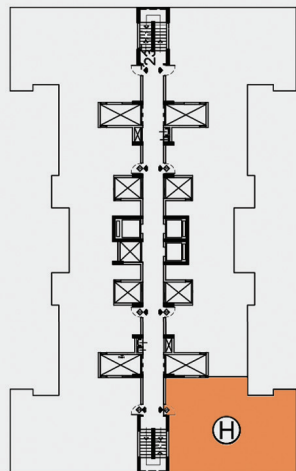
Carpet area as per RERA- (Including internal walls and toilet, excluding balcony)- 778 SQFT





## TYPE - H 3 BHK SUPER BUILT UP AREA- 1449 SQFT

Carpet area as per RERA- (Including internal walls and toilet, excluding balcony)- 1049 SQFT



Dimensions may vary slightly during construction. Furniture and fixtures are indicative only. All dimensions are in centimetres. Plans and areas are subject to minor changes.



**Swimming Pool (Olympic Size)**



**Football Court (Full Size)**



**Indoor Badminton Courts**



**Tennis Courts**



Basket Ball Court



Children's Play Area with Equipment



## DD Sport Club - Amenities

- Club House with Family Health Club, Table Tennis, Billiards, Pool Table, Caroms, Chess and Separate Gym for Ladies
- Swimming Pool (Olympic Size)
- Ladies Pool and Kids Pool
- Football Court (Full-Size)
- Basket Ball Court (Full-Size)
- Tennis Courts
- Indoor Badminton Courts
- Jogging Track
- Children's Play Area with Equipment



*The images shown are for illustrative purpose. Actuals may vary*





## SPECIFICATIONS

- Flooring: Fully Vitrified Tiles Except Toilet and Balconies.
- Putty Finished Plastic Emulsion Painted Walls in the Entire Apartment.
- Anti-Skid Bathroom Floor Tiles with Designer Wall Tiles up to Ceiling.
- Good Quality CP Fittings (Jaquar/Hindware or Equivalent) and White Coloured Sanitary Fittings (Cera or Equivalent).
- Fire Retardant (FR) Cables (V Guard or Equivalent), MCB's and ELCB (L&T/Schneider or Equivalent).
- Modular Switches (Honeywell or Equivalent).
- Front Door- Flush Door fitted with Godrej or Equivalent Lock, Inside Paneled Doors and Powder Coated Aluminum Windows with Glass & Grill.
- AC Point -2 Points in Bedrooms for 3 BHK & 1 Point in Bedroom for 2 BHK Flats (Additional AC Points will be Charged Extra).
- 16 Amps Plug Point - 5 Points per 3 BHK & 4 Points per 2 BHK Flat, Including Geyser Point in all Toilets.
- Provision for Aqua Guard. Provision for Geysers and Exhaust Fan in all Toilets.



## PROXIMITY

MGM School, Mangalapuram	400 mts
Murukkumpuzha Railway Station	1.00 Km
Nissan Digital Hub	2.50 Km
Proposed Unity Mall	2.50 Km
Mangalapuram Junction (NH)	2.50 Km
Technocity, Pallippuram	3.00 Km
Kendriya Vidyalaya, Pallippuram	3.00 Km
Kaniyapuram Railway Station	3.00 Km
Proposed Light Metro	3.00 Km
Blue Mount Public School, Thonnackal	3.50 Km
Kaniyapuram KSRTC Bus Depot	3.50 Km
Bio Life Science Park, Thonnackal	4.00 Km
Sainik School, Kazhakuttom	5.90 Km
Trivandrum International School	7.00 Km
Technopark, Kazhakuttom	7.00 Km
Taurus Zentrum Mall	8.00 Km
Kazhakuttom Railway Station	8.00 Km
Green Field Sports Hub	8.00 Km
St. Thomas Institute for Science & Technology, Chandavila	9.50 Km
Infosys & UST Global	10.50 Km
MGM School, Kazhakuttom	11.50 Km
Lulu Mall	13.00 Km
Trivandrum International Airport	17.00 Km

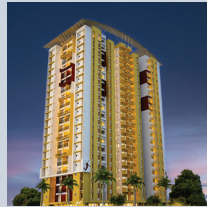
# SOME OF OUR ONGOING AND COMPLETED PROJECTS



**DD DIAMOND DISTRICT**  
Trivandrum



**DD TECH VALLEY**  
Trivandrum



**DD PAVILION**  
Trivandrum



**DD JAL DARSHAN**  
Trivandrum



**DD HIPPODROME**  
Trivandrum



**DD GALLERIA**  
Trivandrum



**DD ARENA**  
Trivandrum



**DD MISTY HILLS**  
Kakkanad



**DD PLATINUM PLANET**  
Kaloor



**DD GOLDEN GATE**  
Kakkanad



**DD NEST**  
Kaloor



**DD TRADE CENTRE**  
M.G. Road, Ernakulam



**DD MILESTONE**  
Kadavanthra Jn.



**DD TRADE TOWER**  
Kakkanad



**DD ROSE GATE**  
Panampilly Nagar



**DD GLOBAL VILLAGE**  
Aluva



**DD DIAMOND PARK**  
Thrissur



**DD SAMUDRA DARSHAN**  
Marine Drive



**DD HIGHWAY HEIGHTS**  
Kundannoor, Maradu



**DD SAPPHIRE GARDEN**  
Thrissur



**DD CITY GATE**  
SH Mount, Kottayam



**DD BHAVANAM**  
Panampilly Nagar



**DD GREEN WOODS**  
Kakkanad



**SUNSET ISLAND**  
Vypin



**DD VASTHRAMAHAL**  
Market Road, Ernakulam



**DD TOWER ONE**  
Thiruvalla



**DD HIGHWAY GATE**  
Maradu



**DD SILVER STONE**  
Vaduthala



**DD VENTURE ONE**  
Thirunakkara, Kottayam



**DD MAJESTIC MOUNT**  
SH Mount, Kottayam



**DD DIAMOND VALLEY**  
Kakkanad



K-RERA/PRJ/TVM/076/2025  
www.rera.kerala.gov.in



**DESAI HOMES PROPERTIES PVT. LTD.**



**DESAI HOMES**®

**A Concrete Business Move**

An ISO 9001 : 2015 Certified Company

T.C-2/2408 (5), 3rd Floor, Asiatic Business Centre, Near Nippon Toyota Showroom  
By-pass Road, Kulathoor P.O, Kazhakuttom, Trivandrum-695583, Kerala, India  
Phone: 0471 4000620, 4000720 | E-Mail: tvm@desaihomes.com

**CORPORATE OFFICE:** Desai Homes, DD Trade Tower, 2nd Floor, Kaloor-Kadavathra Road,  
Ernakulam, Kerala, India.  
www.desaihomes.com

**Branches:** Trivandrum, Kottayam, Thiruvalla, Thrissur, Kozhikode